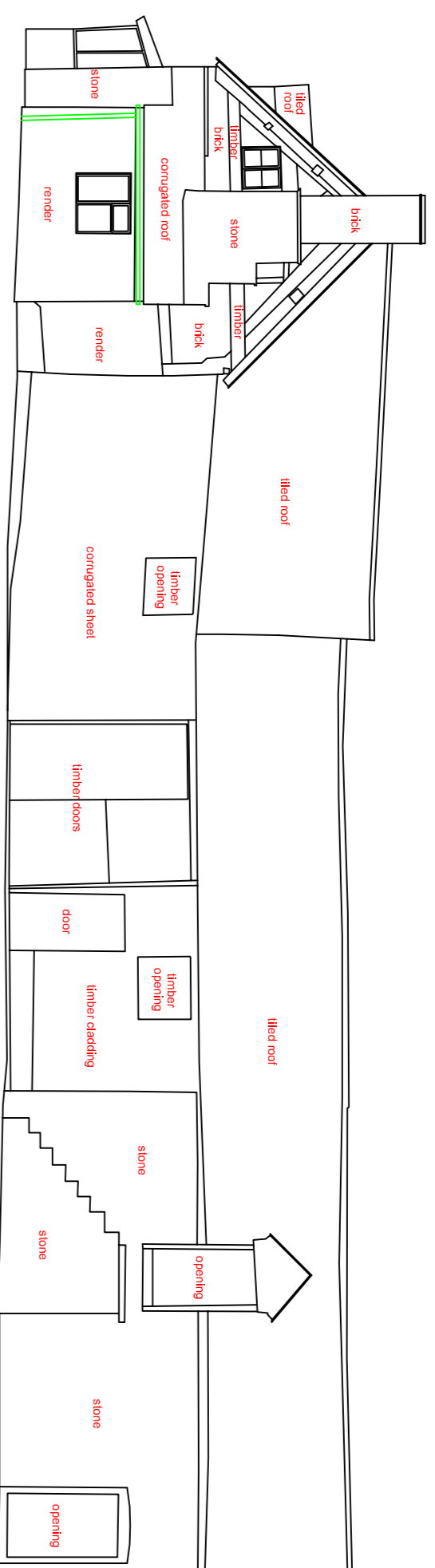
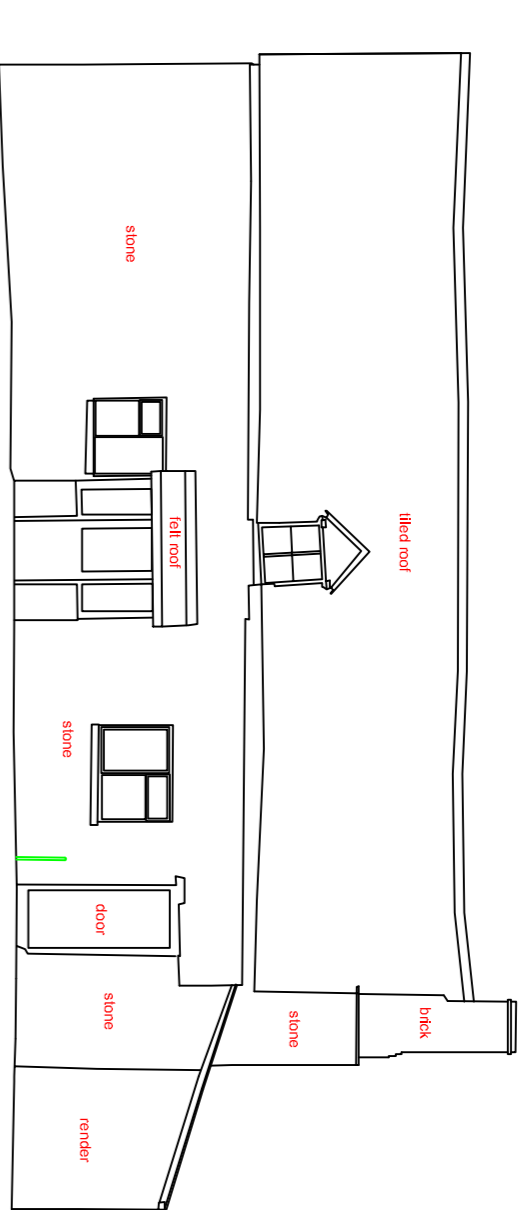


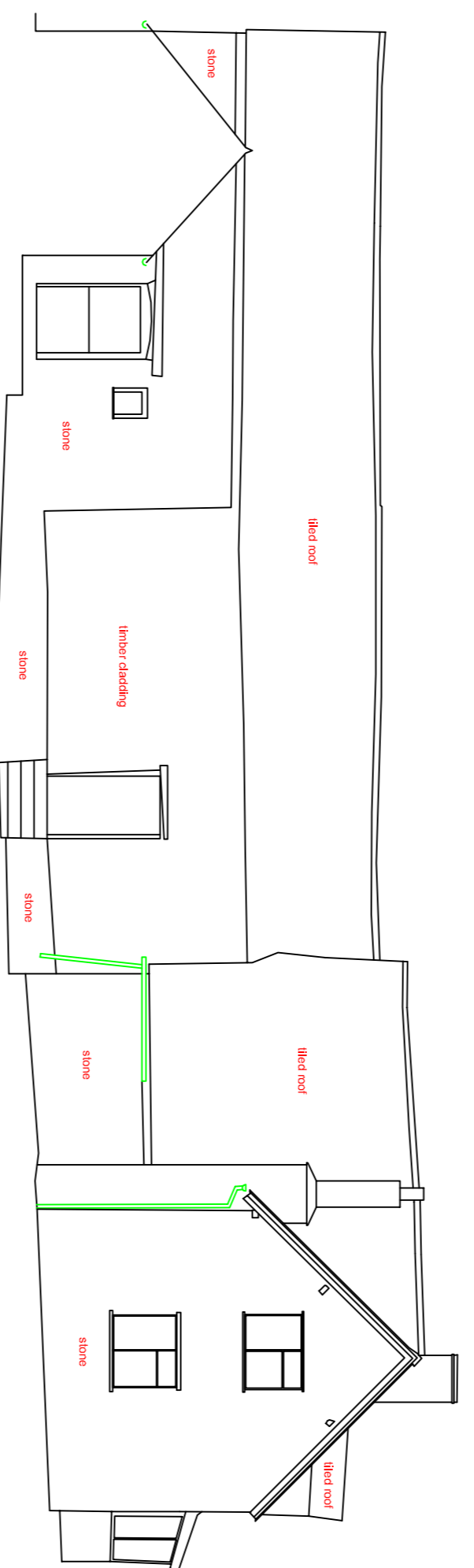
North Elevation - Barn



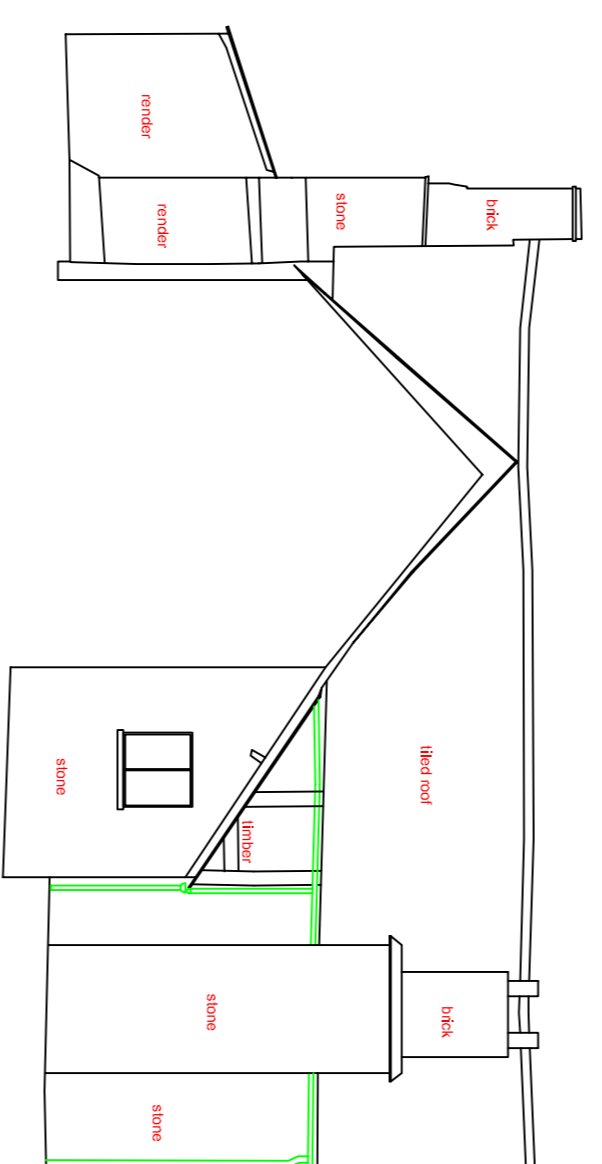
East Elevation - Cottage & Barn



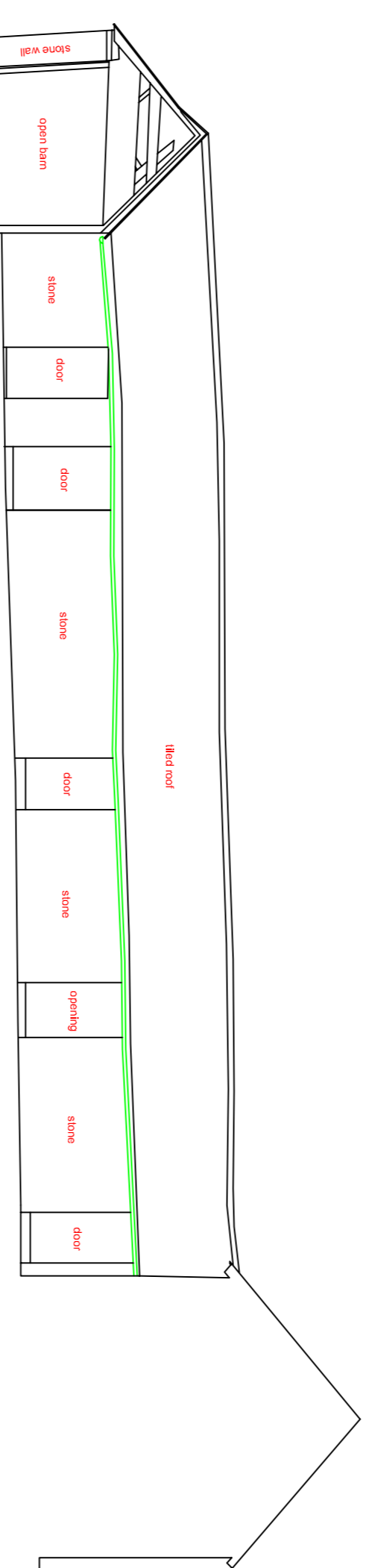
South Elevation - Cottage



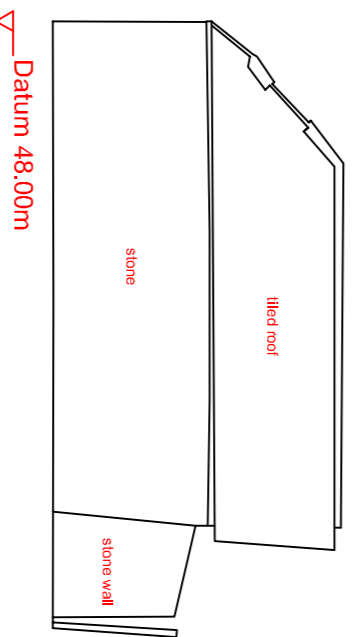
West Elevation - Cottage & Barn



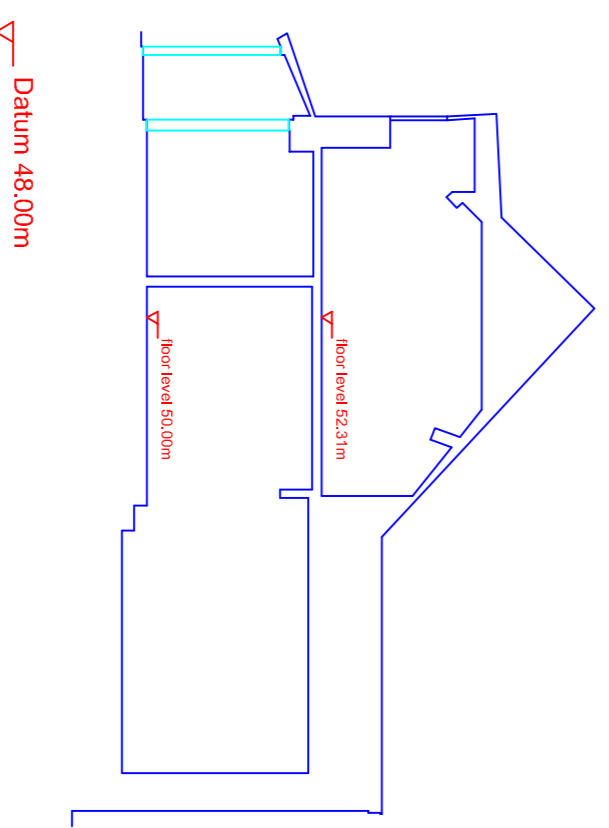
North Elevation - Cottage



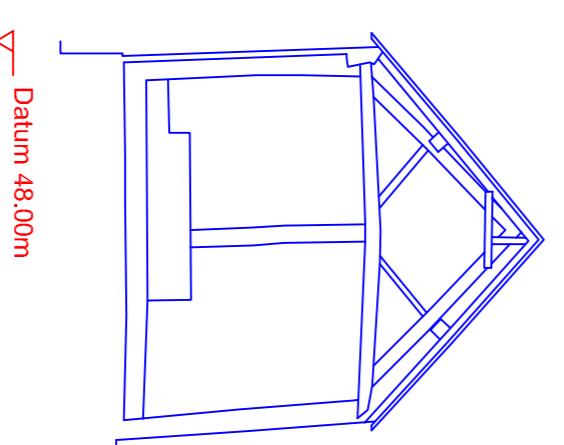
South Elevation - Barn



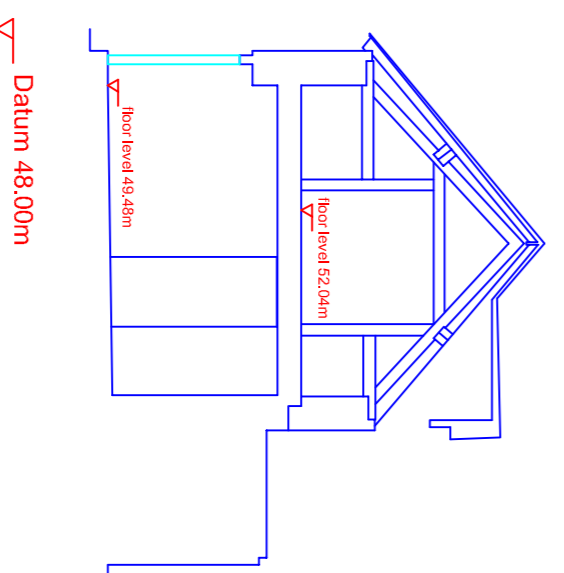
West Elevation - Barn



Section A-A



Section B-B



Section C-C

AV	AIR VALVE	CP	CATCHER	LP	LAMP POST
AV	AIR VALVE	CP9	CONCRETE PAVING SLABS	LP	MANHOLE COVER
BO	ROLLAND	CTV	CABLE TELEVISION COVER	MAR	MARSH
BS	BROADBAND TELECOM COVER	ED	ELECTRIC POLE	RE	ROAD SIGN
CB	CONTROL BOX	ER	EARTH ROD	RS	ROAD SIGN
CL	COVER LEVEL	FH	FIRE HYDRANT	RW	RETAINING WALL

RW	ROUL WATER	UP	UP
G	GULLY	MA	MANHOLE COVER
GV	GAS VALVE	MR	MARSH
HR	INSPECTION COVER	RE	ROAD SIGN
IL	INVERT LEVEL	RS	ROAD SIGN
KO	KERB OUTLET	RW	RETAINING WALL

SP	SIGN POST	WO	WASH OUT
SV	STOP VALVE	VT	VENT
TB	TRAFFIC LIGHT		
TP	TELEPHONE POLE		
WM	WATER METER		

B	BEAM HEIGHT	NO	NOTES
C	CEILING HEIGHT		Levels related to an arbitrary datum. Ground floor level of Little Bitches cottage used as datum, value 49.00m
D	DOOR HEIGHT		Grid related to arbitrary co-ordinates
F	FLOOR LEVEL		North Point indicates only a specification and is in accordance with RICS publication 'SURVEYS OF LAND BUILDINGS & UTILITY SERVICES AT SCALES 1:500 & LARGER 2nd EDITION'
H	HEAD HEIGHT		
S	SILL HEIGHT		

SCALE	1:100	DATE	14/11/12
DRAWING NO.	PLS2012777?_04	DRAWN BY	PAL

DRAWING TITLE: Elevations Sections A-A, B-B & C-C

CLIENT: _____

PROJECT: _____

SCALE: 1:100

DRAWING NO.: PLS2012777?_04

DATE: 14/11/12

DRAWN BY: PAL